



**Valve Regulated Lead Acid Battery**

Maintenance-Free Sealed Lead Acid Battery.

Absorbent Glass Mat (AGM) technology for efficient gas recombination of up to 99%.

**Design for Cyclic Applications**

**【Design Life】**

400 cycles @ 100%DOD at 25°C

1800 cycles @ 30%DOD at 25°C

**【Operating Temperature Range】**

Nominal Operating Temperature : 25°C (77°F)

Discharge : -15°C ~ 50°C (5°F~122°F)

Charge: -15°C ~ 40°C (5°F~104°F)

Storage: -15°C ~ 40°C (5°F~104°F)

**【Equalization Charging Voltage】**

14.4 ~ 15.0 VDC/Unit at 25°C (77°F)

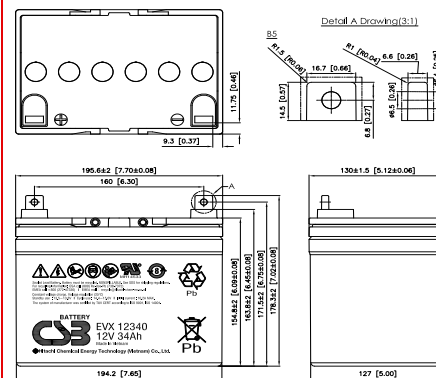
**【Self Discharge】**

Less than 10% after 90 days, can be stored up to 6 months at 25°C (77°F);

Fully recharging is required before usage, and charged sooner if stored at higher temperature than 25°C (77°F).

**Specification**

Nominal Voltage	12V (6 cells per unit)		
Nominal Capacity	34 AH @20HR-rate to 1.75V per cell @25°C (77°F)		
Weight	Approx. 10.77 Kg (23.74 lbs)		
Maximum Discharge Current	400A (5sec)		
Internal Resistance	Approx. 9.2 mΩ		
Short Circuit Current	849A		
Maximum Charge Current	10.20A		
Terminal types	B5 terminal to accept M6 nut & bolt		
Terminal tightening torque	51.7±10.3 Kgf-cm / 44.9±9.0 Lbf-in / 5.1±1.0 N-m		
Container Material	ABS (UL 94-HB)		
Dimensions	Length (L)	195.6±2.0 mm	7.70±0.08 inch
	Width (W)	130.0±1.5 mm	5.12±0.06 inch
	Container Height (h)	154.8±2.0 mm	6.09±0.08 inch
	Overall Height (H)	178.3±2.0 mm	7.02±0.08 inch



**Constant Current Discharge Characteristics Unit: A (25°C, 77°F)**

F.V/Time	30MIN	45MIN	60MIN	90MIN	2HR	3HR	4HR	5HR	6HR	8HR	10HR	20HR
1.60V	34.5	25.2	20.2	14.6	11.6	8.25	6.53	5.39	4.62	3.63	3.06	1.85
1.67V	33.6	24.7	19.8	14.5	11.5	8.19	6.49	5.34	4.57	3.57	3.02	1.80
1.70V	32.8	24.2	19.5	14.3	11.3	8.12	6.42	5.28	4.51	3.51	2.95	1.76
1.75V	31.8	23.6	19.1	14.0	11.2	8.02	6.36	5.22	4.45	3.46	2.90	1.72
1.80V	30.8	23.0	18.7	13.8	11.0	7.86	6.27	5.14	4.38	3.41	2.86	1.69
1.85V	29.9	22.4	18.3	13.5	10.8	7.74	6.12	5.07	4.32	3.36	2.82	1.65

**Constant Power Discharge Characteristics Unit: W (25°C, 77°F)**

F.V/Time	30MIN	45MIN	60MIN	90MIN	2HR	3HR	4HR	5HR	6HR	8HR	10HR	20HR
1.60V	414	302	242	175	141	99.0	78.4	64.7	55.5	43.6	36.0	19.5
1.67V	404	296	238	173	139	98.3	78.0	64.1	54.8	42.8	35.3	19.0
1.70V	393	290	234	171	137	97.4	77.4	63.4	54.1	42.2	34.6	18.5
1.75V	382	283	229	168	135	96.3	76.5	62.6	53.4	41.5	33.9	18.0
1.80V	370	276	224	165	132	95.1	75.5	61.8	52.7	40.9	33.4	17.6
1.85V	359	269	219	162	130	93.7	74.2	60.8	51.8	40.3	32.9	17.1

Please refer to the official site for the latest rating confirmation. URL: [www.csb-battery.com](http://www.csb-battery.com)

Issued: 200120

**Sales Offices**

**日立化成能源科技股份有限公司**  
Hitachi Chemical Energy Technology Co., Ltd.

**BUSINESS HEADQUARTERS**

Tel: +886-2-2880-5600

Fax: +886-2-2888-3300

**USA OFFICE**

Tel: +1-817-244-7777 / 1-(800)3-CSB-USA (272872)

Fax: +1-817-244-4445

**SHENZHEN OFFICE (CHINA)**

Tel: +86-755-8831-6488, 8831-6775

Fax: +86-755-8831-6075

**EUROPE (EMEA) OFFICE**

Tel: +31(0)180-418-140

Fax: +31(0)180-418-327

**SHANGHAI OFFICE (CHINA)**

Tel: +86-21-5046-1622, 5046-0833

Fax: +86-21-5046-1046

**TAIPEI OFFICE**

Tel: +886-2-2880-5600

Fax: +866-2-2888-3300

**BEIJING OFFICE (CHINA)**

Tel: +86-10-5820-5336, 5820-5338

Fax: +86-10-5820-3053

Recognized under UL 1989,  
and certified by ISO 9001, 14001.

